

# specialized

## LOGIQ 5 for OB/Gyn Exams

The LOGIQ 5 Expert ultrasound system provides the versatility and performance to help you differentiate your OB/Gyn practice. From fetal measurements, to fibroid or cystic structure visualization, this system will help you deliver your women's healthcare specialty with confidence.

GE's TruScan architecture provides you with advanced diagnostic tools to provide better penetration and contrast resolution. Features such as Phased Inversion Harmonics helps delivers clear border definition for improved visualization of the endometrial lining and clearer tumor assessments. Our wide-band, multi-frequency probes allow you to get the study completed with a single probe, while the cine loop capability enables you to capture the critical images needed, even on an active fetus. At the same time the system is easier than ever to operate with user-friendly features, including Automatic Tissue , Spectral Doppler and Color optimization, that give you the best image possible at the a touch of a button.

Simplified reporting is yours too, with customizable report pages that can be pre set for all phases of fetal growth and easily stored, shared or printed

So whether you choose the Expert or the Pro, the LOGIQ 5 provides advanced technology and exceptional image quality in a compact sized ultrasound system.





Four chamber fetal heart imaged with coded Phased Inversion Harmonics and digital zoom



Fetal abdomen and heart with visualization of carotid artery imaged with coded Phased Inversion Harmonics



Full fetal facial detail using Easy3D rendering mode



Fetal profile imaged with coded Phased Inversion Harmonics



Circle of Willis on fetal head utilizing Power Doppler



Fetal foot imaged with conventional imaging

GE Healthcare  
 4855 W. Electric Avenue  
 Milwaukee, WI 53219  
 U.S.A.  
[www.gehealthcare.com](http://www.gehealthcare.com)

© 2005 General Electric Company – All rights reserved.  
 GE Healthcare, a division of General Electric Company.

LOGIQ 5 is a trademark of GE Healthcare.  
 GE Medical Systems, a General Electric company,  
 going to market as GE Healthcare.

General Electric Company reserves the right to make changes in specifications and features shown herein, or discontinue the product described at any time without notice or obligation. Contact your GE Representative for the most current information.



# powerful

## LOGIQ 5 for Urology Procedures

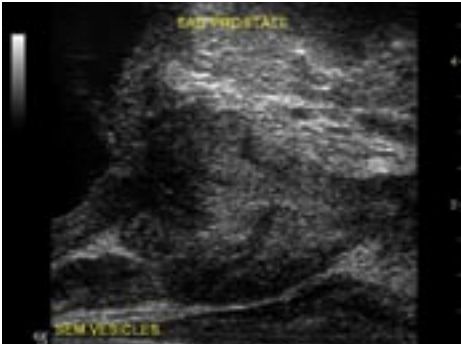
GE's LOGIQ 5 provides the versatility and performance to meet and exceed your clinical needs in the urology practice. The powerful system provides you with the latest technology and advanced features that set you up to deliver diagnostic imaging and the latest in ultrasound-guided procedures.

With unparalleled near-field resolution, you have the option to choose end-fire or bi-plane transducer technology to image and guide biopsies in the prostate. High-frequency imaging is made simple with transducers that perform through a range of frequencies—enabling you to get the study efficiently completed with a single probe. Furthermore, the LOGIQ 5 delivers the transducers, implant grid and reporting and measurement package to support brachytherapy and cryotherapy treatment options.

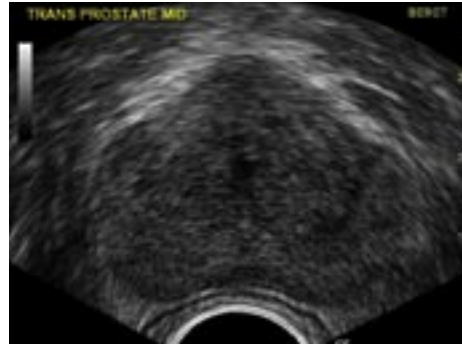
Scanning with LOGIQ 5 is simple – an adjustable, ergonomic keyboard, touch panel controls, and features such as Automatic Optimization, delivers peak image quality at the touch of a button.

So whether you choose the Expert or the Pro, the LOGIQ 5 provides advanced technology and exceptional image quality in a compact sized ultrasound system.

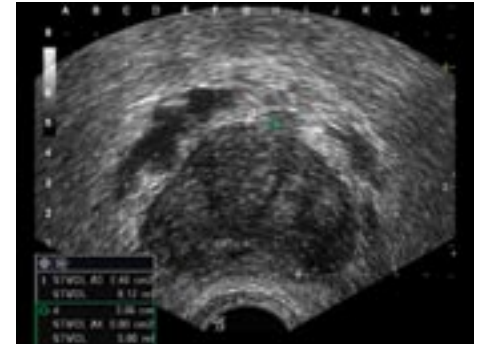




Sagittal view of prostate and seminal vesicles imaged with the biplane ERB probe



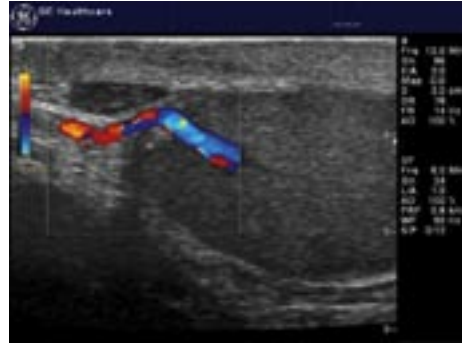
Transverse view of prostate imaged with biplane BE9C probe



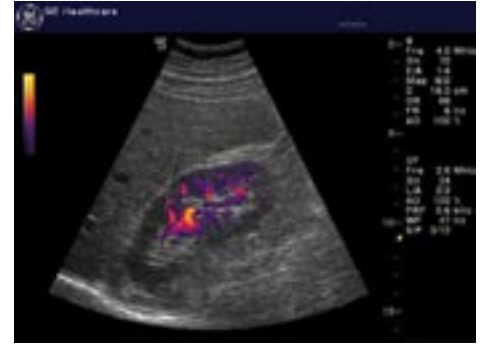
Prostate gland with seed planning grid overlay and steper volume calculation



Ureterocele in bladder imaged with code phased inversion Harmonics



Testicular artery image with color Doppler



Kidney perfusion imaged with power Doppler



E8C



BE9C



ERB

GE Healthcare  
 4855 W. Electric Avenue  
 Milwaukee, WI 53219  
 U.S.A.  
[www.gehealthcare.com](http://www.gehealthcare.com)

© 2005 General Electric Company – All rights reserved.  
 GE Healthcare, a division of General Electric Company.

LOGIQ 5 is a trademark of GE Healthcare.  
 GE Medical Systems, a General Electric company,  
 going to market as GE Healthcare.

General Electric Company reserves the right to make changes in specifications and features shown herein, or discontinue the product described at any time without notice or obligation. Contact your GE Representative for the most current information.



GE Healthcare

# simple

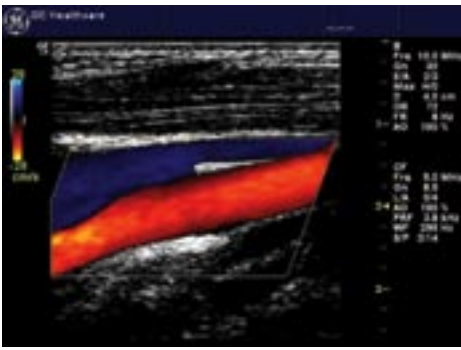
## LOGIQ 5 for Vascular Studies

The LOGIQ 5 provides the versatility and performance to meet your clinical needs in a high-throughput vascular lab. The system boasts automatic features and single key stroke workflow to help make complex vascular studies, quick and routine.

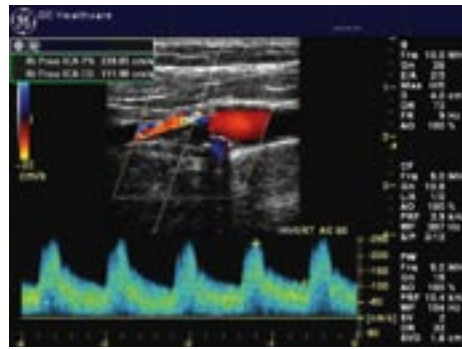
GE's wide-band, multi-frequency transducers provide the contrast resolution and color sensitivity you need to visualize the details of vascular pathology and speed a diagnosis on even the toughest cases. Advanced features such as B-Flow, provides a sensitive means of directly imaging blood flow in a variety of conditions: from very slow to high velocity jets - helping to characterize blood flow. Automatic real-time calculation simplifies spectral Doppler measurements, and GE's Report Writer allows you to quickly and easily document the case.

So whether you choose the Expert or the Pro, the LOGIQ 5 provides advanced technology and exceptional image quality in a compact sized ultrasound system .





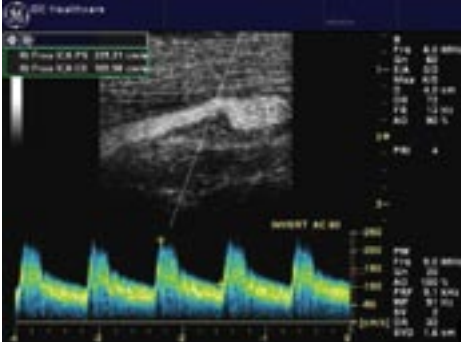
Internal jugular vein and common carotid artery imaged with color Doppler



Stenotic lesion in internal carotid artery imaged with spectral Doppler and auto calculations



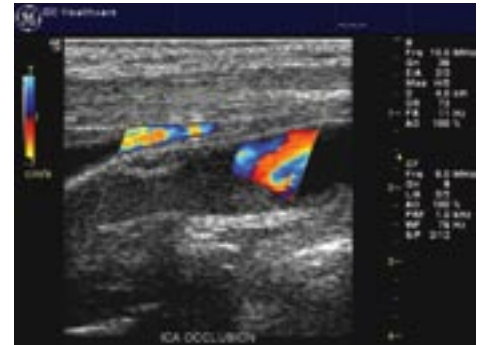
Carotid bifurcation of internal carotid artery and external carotid artery imaged with B-Flow



Hemodynamic flow in internal carotid artery imaged with B-flow and spectral Doppler



Cephalic vein thrombus imaged with power Doppler and virtual convex



Internal carotid artery occlusion using color Doppler

GE Healthcare  
 4855 W. Electric Avenue  
 Milwaukee, WI 53219  
 U.S.A.  
[www.gehealthcare.com](http://www.gehealthcare.com)

© 2005 General Electric Company – All rights reserved.  
 GE Healthcare, a division of General Electric Company.

LOGIQ 5 is a trademark of GE Healthcare.  
 GE Medical Systems, a General Electric company,  
 going to market as GE Healthcare.

General Electric Company reserves the right to make changes in specifications and features shown herein, or discontinue the product described at any time without notice or obligation. Contact your GE Representative for the most current information.



# robust

## LOGIQ 5 for General Imaging

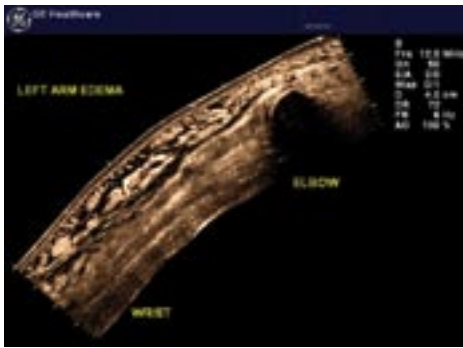
The LOGIQ 5 Expert ultrasound system provides the versatility and performance required to image the wide variety of patients you see in the Radiology Department each day. From specialized applications such as fetal measurements or cardiovascular studies, to more routine imaging of the kidney, liver or small parts, the LOGIQ 5 performs.

GE's TruScan architecture provides you with advanced diagnostic tools to provide better penetration and contrast resolution with features such as Phased Inversion Harmonics. Advanced, high-frequency transducers provide excellent contrast resolution and color sensitivity, while the wide-band, multi-frequency probes allow you to get the study efficiently completed with a single probe. At the same time the system is easier than ever to operate with the user-friendly features, including Automatic Tissue, Spectral Doppler and Color optimization, that give you the best image possible at just a touch of a button.

Simplification in reporting streamlines the workflow in the busy radiology department as well, enabling customizable report pages that can be pre set and easily stored, shared or printed.

So whether you choose the Expert or the Pro, the LOGIQ 5 provides advanced technology and exceptional image quality in a compact sized ultrasound system.





Edema in arm imaged from wrist to elbow using LOGIQ view



Stone in common bile duct



Thyroid cyst imaged with Virtual convex and coded Phased Inversion Harmonics



Renal cyst with acyties imaged with fundamental imaging



Gall bladder with sludge imaged with coded Phased Inversion Harmonics and Automatic Optimization



Edema in arm imaged at high frequency with virtual convex technique

GE Healthcare  
 4855 W. Electric Avenue  
 Milwaukee, WI 53219  
 U.S.A.  
[www.gehealthcare.com](http://www.gehealthcare.com)

© 2005 General Electric Company – All rights reserved.  
 GE Healthcare, a division of General Electric Company.

LOGIQ 5 is a trademark of GE Healthcare.  
 GE Medical Systems, a General Electric company,  
 going to market as GE Healthcare.

General Electric Company reserves the right to make changes in specifications and features shown herein, or discontinue the product described at any time without notice or obligation. Contact your GE Representative for the most current information.



# comprehensive

## LOGIQ 5 for Cardiac Assessment

The LOGIQ 5 Expert ultrasound system provides the versatility and performance needed to perform quality cardiac studies with high diagnostic confidence.

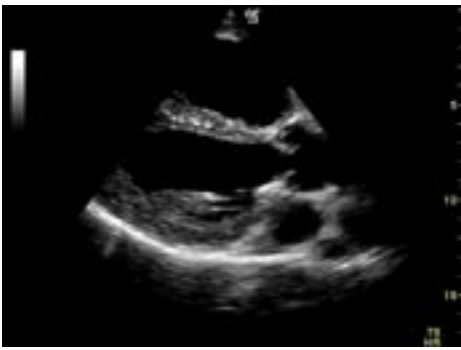
The system's lightweight sector transducers provide high performance contrast resolution for excellent tissue differentiation in the heart. The system delivers high frame rate and Doppler sensitivity to effectively assess critical cardiac performance including wall motion, wall thickness, valve function and assessment of blood flow.

GE's customizable measurement and reporting package allows you to create measurement formulas and reports to fit your clinic's unique needs.

In addition, GE's LOGIQ 5 ultrasound system offers ECG triggering, enabling you to synchronize the image with the electrical signals of the patient's heart, and CW Doppler capable of capturing low and high velocity jets - to support a comprehensive cardiac study.

So whether you choose the Expert or the Pro, the LOGIQ 5 provides advanced technology and exceptional image quality in a compact sized ultrasound system.





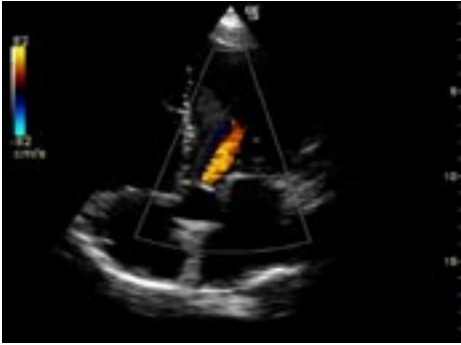
Parasternal Long axis aortic and mitral valves imaged with coded phased inversion harmonics



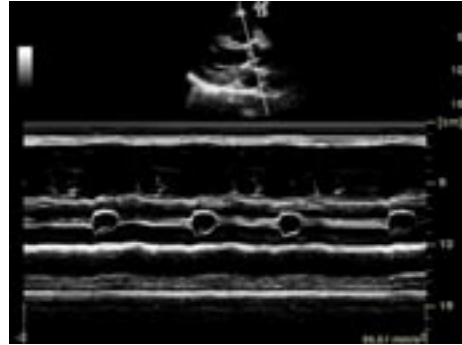
Mild pulmonic insufficiency imaged with 3MHz sector probe



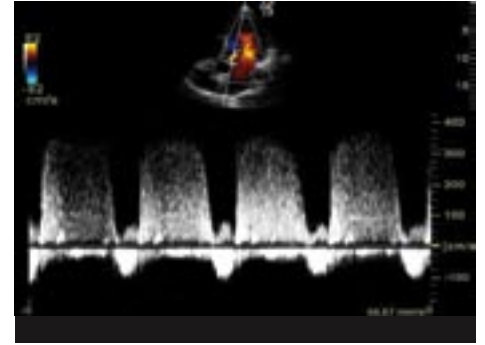
Doppler evaluation of tricuspid regurgitation imaged with coded phased inversion harmonics



Color Doppler showing Aortic regurgitation



M-mode of aortic valve showing systolic fluttering



Spectral Doppler showing aortic regurgitation

GE Healthcare  
4855 W. Electric Avenue  
Milwaukee, WI 53219  
U.S.A.  
[www.gehealthcare.com](http://www.gehealthcare.com)

© 2005 General Electric Company – All rights reserved.  
GE Healthcare, a division of General Electric Company.

LOGIQ 5 is a trademark of GE Healthcare.  
GE Medical Systems, a General Electric company,  
going to market as GE Healthcare.

General Electric Company reserves the right to make changes in specifications and features shown herein, or discontinue the product described at any time without notice or obligation. Contact your GE Representative for the most current information.

